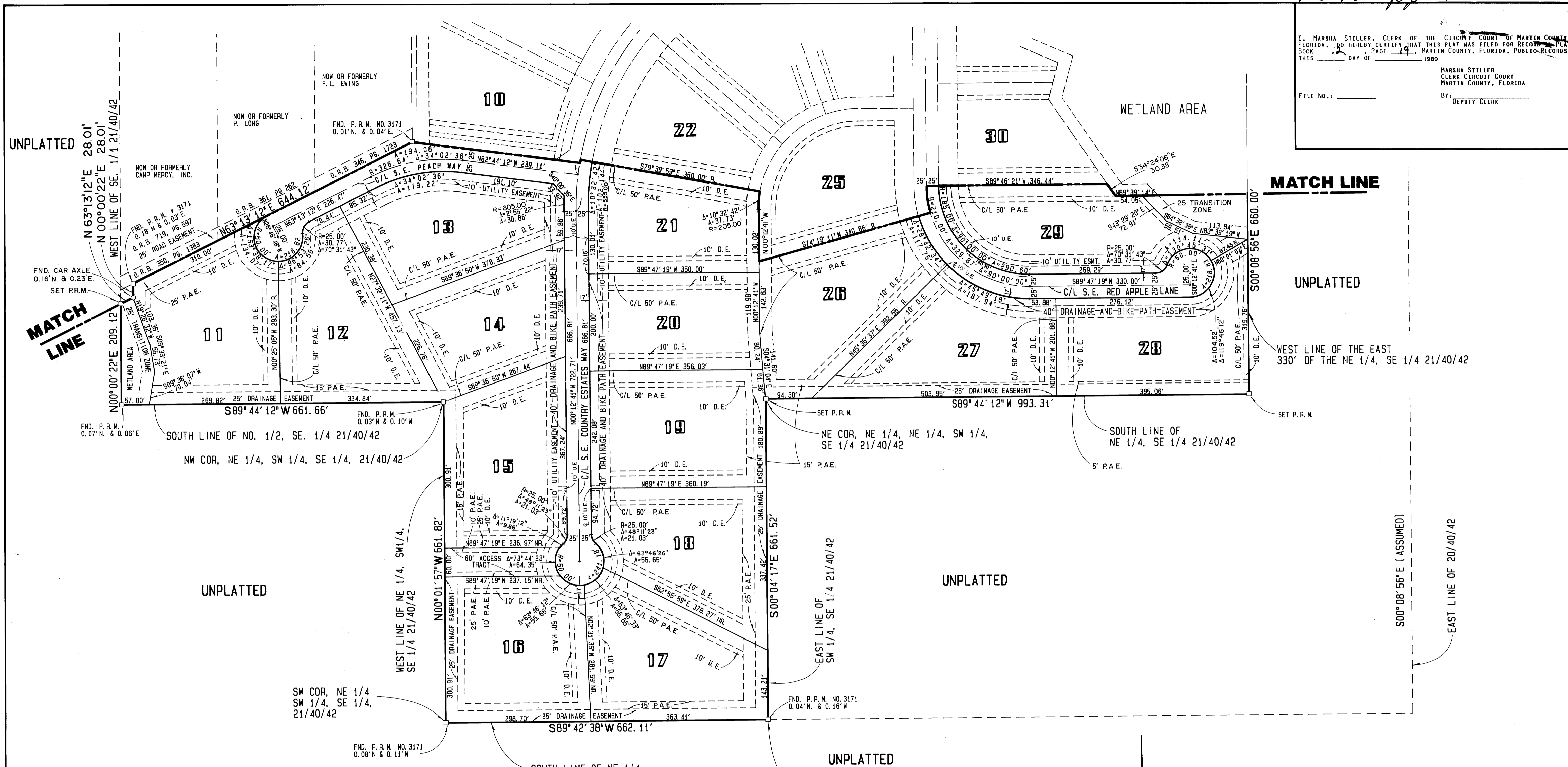


I, MARSHA STILLER, CLERK OF THE CIRCUIT COURT OF MARTIN COUNTY, FLORIDA, DO HEREBY CERTIFY THAT THIS PLAT WAS FILED FOR RECORD IN PLAT BOOK _____, PAGE 19, MARTIN COUNTY, FLORIDA, PUBLIC RECORDS, THIS _____ DAY OF _____, 1989.

MARSHA STILLER
CLERK CIRCUIT COURT
MARTIN COUNTY, FLORIDA
By: _____
DEPUTY CLERK

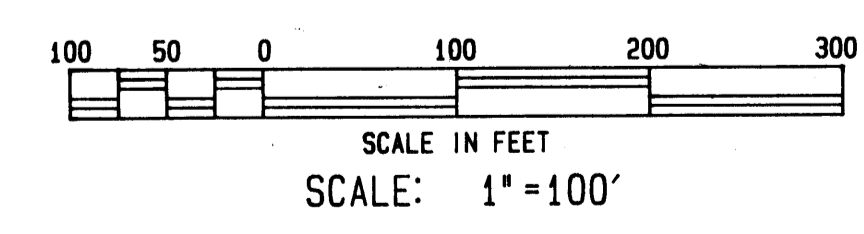
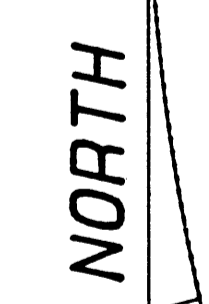
FILE NO. _____



PLAT OF ISLAND COUNTRY ESTATES (A P.U.D.)

BEING A PORTION OF SECTION 21, TOWNSHIP 40 SOUTH,
RANGE 42 EAST, MARTIN COUNTY, FLORIDA

JANUARY 1989



PLAT OF		
ISLAND COUNTRY ESTATES		
9176 ALTERNATE A1A, LAKE PARK, FLORIDA 33403 • 305/842-4233		
FIELD M. TUBB	JOB NO 88-1377	F.B. MC 7 PG 36
OFFICE M. BROWN	DATE JANUARY 1989	DWG NO 88-1377
CK'D F. GRYTA	REF 81-65	SHEET 3 OF 3